

The
Andrew Scott
Flute
Method
Book 2

by
Andrew Scott

Visit me on the web:

andrewscottmusic.com



Contents

Lesson 1

- The Note G in the Middle Register 3
 11 exercises and songs including
 Scarborough Fair, Beautiful Dreamer,
 Botany Bay and
Spaced Out Blues (duet) 3-7

Lesson 2

- The Note F \sharp in the Middle Register 8
 The G Major Scale 8
 9 exercises and songs including
 Sakura, Serenade in G and
Brahms' Lullaby 8-11

Lesson 3

- The Note A in the Middle Register 12
 The A Natural Minor Scale 12
 10 exercises and songs including
 God Rest Ye Merry Gentlemen,
All Through the Night and
Morning Has Broken 12-15

Lesson 4

- The Note G \sharp or A \flat 16
 7 exercises and songs including
 Greensleeves and **Auld Lang Syne** 16-18

Lesson 5

- The Note C \sharp or D \flat 19
 The D Major Scale 19
 The A Major Scale 19
 9 exercises and songs including O Come
 All Ye Faithful and
Beethoven's Melody in D Major 19-21

Lesson 6

- The Sixteenth Note (or Semiquaver) 22
 The $\frac{2}{4}$ (Two Four) Time Signature 23
 The Eighth (or Semiquaver) Rest 25
 12 exercises and songs including The
 Arkansas Traveller, The 1812 Overture
 and **The William Tell Overture** 22-26

Lesson 7

- The Dotted Eighth Note (or Dotted Quaver) ... 27
 8 exercises and songs including Here
 Comes the Bride, Grenadiers March
 and **English Country Gardens** 27-30

Lesson 8

- The Note B in the Middle Register 31
 6 exercises and songs including Scotland
 the Brave, and **Non Piu Andrai** 30-31

Lesson 9

- The Note C in the Middle Register 32
 The C Major Scale 32
 10 exercises and songs including
 The Ash Grove, The Orange and
 the Green and
Sleeping Beauty Waltz 32-35

Lesson 10

- The Note D \sharp or E \flat 36
 The E Major Scale 36
 The E \flat Major Scale 37
 13 exercises and songs including
 O Sole Mio, Won't You Come Home
 Bill Bailey, Dark Eyes, **Toreador's March**,
 and **Theme from Romeo And Juliet** 36-41

Fingering 43

- Chart** 42
Glossary 43
Tuning the Flute 44

Lesson 1

The Note G (in the Middle Register)

space above the staff

same fingering

The fingering for this note is the same as for the G on the second line.

Remember to tune your flute to the CD before you begin each playing session.

Forgotten how to tune up? See page 44.

Tuning Track 1

Middle G Exercise 1 Track 2 Bossa Nova Style

Measures 1-8: G, G7, C, Eb, G, Dbo, D7, G

Middle G Exercise 2 Track 3 Bossa Nova Style

Measures 5-14: G7, G7, G7, G7, C, C, G7, G7, G7, G7, G7, G7, C, C

Middle G Exercise 3 Track 4 Bossa Nova Style

Measures 6-8: G, G7, C7, Eb, G, Bbo, D7, G

G & G Minor Exercise 1  *Track 5*

Waltz Style

Chords: G, G, Gm, Gm, G, Gm, G, G

Measure numbers: 2, 3, 4, 5, 6, 7, 8

G & G Minor Exercise 2  *Track 6*

Latin Rock Style

Chords: G, G, Gm, Gm, G, G, D7, G

Measure numbers: 2, 3, 4, 5, 6, 7, 8

Botany Bay  *Track 7*

Slow Waltz Style

5 beats introduction.

Chords: F, C, F, F, C, F, Bb, F, F, C, F, F, F, C, F, Bb, F, C, F, F, Bb, F, F, Bb, F, C, F, F

Measure numbers: 1, 2, 3, 4, 5, 6, 7, 8, 9, 10, 11, 12, 13, 14, 15, 16, 17, 18, 19, 20, 21, 22, 23, 24, 25, 26, 27, 28, 29, 30, 31, 32

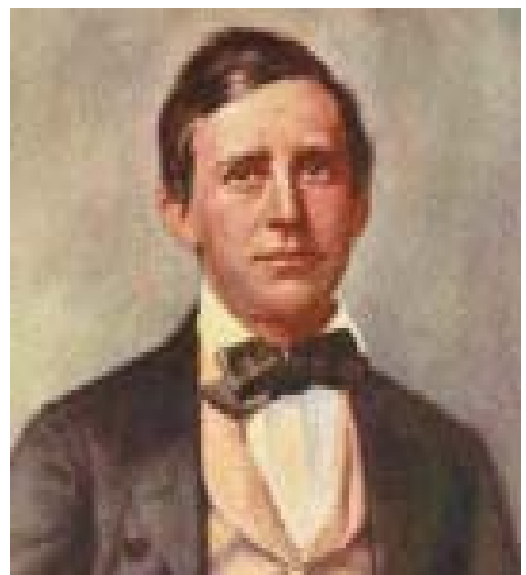


Musical score for "Beautiful Dreamer" in 3/4 time, featuring a melody line with chord symbols and measure numbers 1 through 50.

Chord symbols: F, Gm, C7, F, G7, Bb.

Measure numbers: 1, 2, 3, 4, 5, 6, 7, 8, 9, 10, 11, 12, 13, 14, 15, 16, 17, 18, 19, 20, 21, 22, 23, 24, 25, 26, 27, 28, 29, 30, 31, 32, 33, 34, 35, 36, 37, 38, 39, 40, 41, 42, 43, 44, 45, 46, 47, 48, 49, 50.

Stephen Foster (born 1826 in Pittsburgh, USA, died 1864 in New York) composed more than 170 humorous and sentimental songs depicting life in southern USA in the 19th century. Many of his songs are often used on the soundtrack of the Bugs Bunny Show.



Scarborough Fair



Track 9

Earl Klugh Style

Musical score for Scarborough Fair, Track 9, Earl Klugh Style. The score is in 3/4 time and consists of 18 measures. The key signature has one flat (Bb).

Measures 1-6: Gm, Gm, F, Gm, Bb, Gm. Measures 7-12: C, D, D, Gm, Bb, Bb. Measures 13-18: F, F, Gm, F, Dm, Gm.

Checkmarks are present above measures 4, 9, 11, 14, and 17.

The House of the Rising Sun



Track 10

Gospel Swing Waltz Style

5 beats introduction.

Musical score for The House of the Rising Sun, Track 10, Gospel Swing Waltz Style. The score is in 3/4 time and consists of 32 measures. The key signature has two flats (Bb and Eb).

Measures 1-6: Gm, Gm, Bb, Bb, C, C. Measures 7-12: Eb, Eb, Gm, Gm, Bb, Bb. Measures 13-18: D7, D7, D7, D7, Gm, Gm. Measures 19-24: Bb, Bb, C, C, Eb, Eb. Measures 25-32: Gm, Gm, D7, D7, Gm, Gm, Gm.

Checkmarks are present above measures 4, 9, 11, 14, 17, 20, 23, 28, and 32.

Spaced Out Blues*Track 11**Count Basie Style**3 beats introduction.*

Student

Teacher

G G G7 G7

C7 C7 G D7 Dm

D7 C7 G G

1 2 3 4

5 6 7 8

9 10 11 12

What Shall We Do with the Drunken Sailor?*Track 12**Bossa Nova Style*

Gm Gm F F

Gm Gm Bb F Gm

Gm Gm F F

Gm Gm Bb F Gm

1 2 3 4

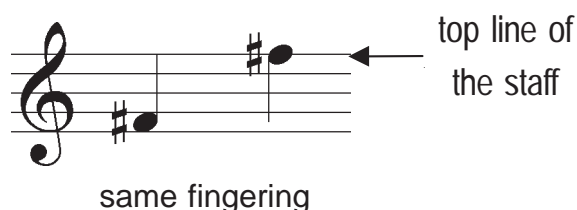
5 6 7 8

9 10 11 12

13 14 15 16

Lesson 2

The Note F# (in the Middle Register)



The fingering for this note is the same as for the F# in the 1st space.

Middle F# Exercise 1 Track 13

Bossa Nova Style

Remember that a sharp sign at the beginning of a staff applies to all the F notes in the piece.

Middle F# Exercise 2 Track 14

Samba Style

The sharp sign in the key signature applies to **all** F notes on the staff - those on the top line as well as those in the first space. All the notes in this exercise are F#.

The G Major Scale Track 15

Dixieland Jazz Style

The G Major Arpeggio  *Track 16*

Alberti Style

An arpeggio is the notes of a chord played one at a time.

A major chord contains the 1st, 3rd, and 5th notes of its corresponding major scale.

The G major chord contains the 1st, 3rd, and 5th notes of the G major scale, ie, G, B and D. When you play the notes of the G major chord one at a time you are playing the G major arpeggio.

Sakura  *Track 17*

Classical Japanese Style

Cruisin'  *Track 18*

Guitar Bossa Style

C to D Exercise Track 19

Merengue Style

This exercise is for you to practise changing smoothly between C and D, which is what you will need to be able to do for the following piece.

Musical notation for C to D Exercise, Track 19. The exercise is in C major, 4/4 time. It consists of two staves of music. The first staff contains measures 1-4 with chords F, D, F, D, F, D, F, D, and C. The second staff contains measures 5-8 with chords G, C, Am, F, C7, and F. The piece ends with a repeat sign.

Serenade in G Track 20

Johannes S Bach

Baroque Style



Johannes S. Bach (born Eisenach, Germany, 1685; died Leipzig, Germany, 1750) was one of the most prolific creators of all time. In addition to composing more than 1200 pieces of music, he was also married twice and fathered 20 children.

Musical notation for Serenade in G, Track 20. The piece is in G major, 3/4 time. It consists of four staves of music. The first staff contains measures 1-4 with chords G, G, C, and G. The second staff contains measures 5-8 with chords Am, G, D7, and D7. The third staff contains measures 9-12 with chords G, G, C, and G. The fourth staff contains measures 13-16 with chords Am, G, D7, and G. The piece ends with a repeat sign.

Lullaby  Track 21

Johannes Brahms
Bossa Waltz Style

5 beats count-in.

Student 1

Student 2



Chords: G, G, G, D, D7, D7, G, C, G, C, G, D7, G

Measures: 1, 2, 3, 4, 5, 6, 7, 8, 9, 10, 11, 12, 13, 14, 15, 16



Johannes Brahms (born Hamburg, Germany, 1833; died Vienna, Austria, 1897) studied the piano from the age of seven and later gained experience as an arranger for his father's light orchestra. He gave concerts of his own music, made tours of Europe and taught the piano. He settled permanently in Vienna in 1868.

Lesson 3

The Note A in the Middle Register

1st ledger line above the staff

same fingering

The fingering for this note is the same as for the A in the second space. Short lines above or below a staff are called ledger lines.

A in the Middle Register Exercise 1 *Track 22* *Samba Style*

A in the Middle Register Exercise 2 *Track 23* *Jumpy Bossa Style*

A Natural Minor Scale *Track 24* *Swing Jazz Style*

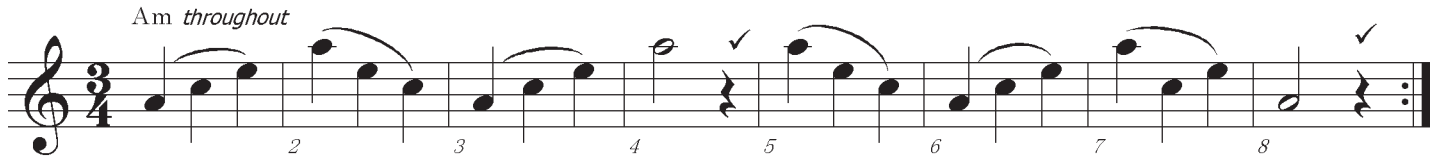
A Minor Arpeggio  *Track 25*

Bossa Nova Style

In the previous lesson we saw that arpeggios are the notes of a chord played one at a time.

A minor chord contains the 1st, 3rd, and 5th notes of its corresponding minor scale. The A minor chord contains the 1st, 3rd, and 5th notes of the A minor scale, ie, A, C and E. When you play these notes one at a time you are playing the A minor arpeggio.

Am throughout

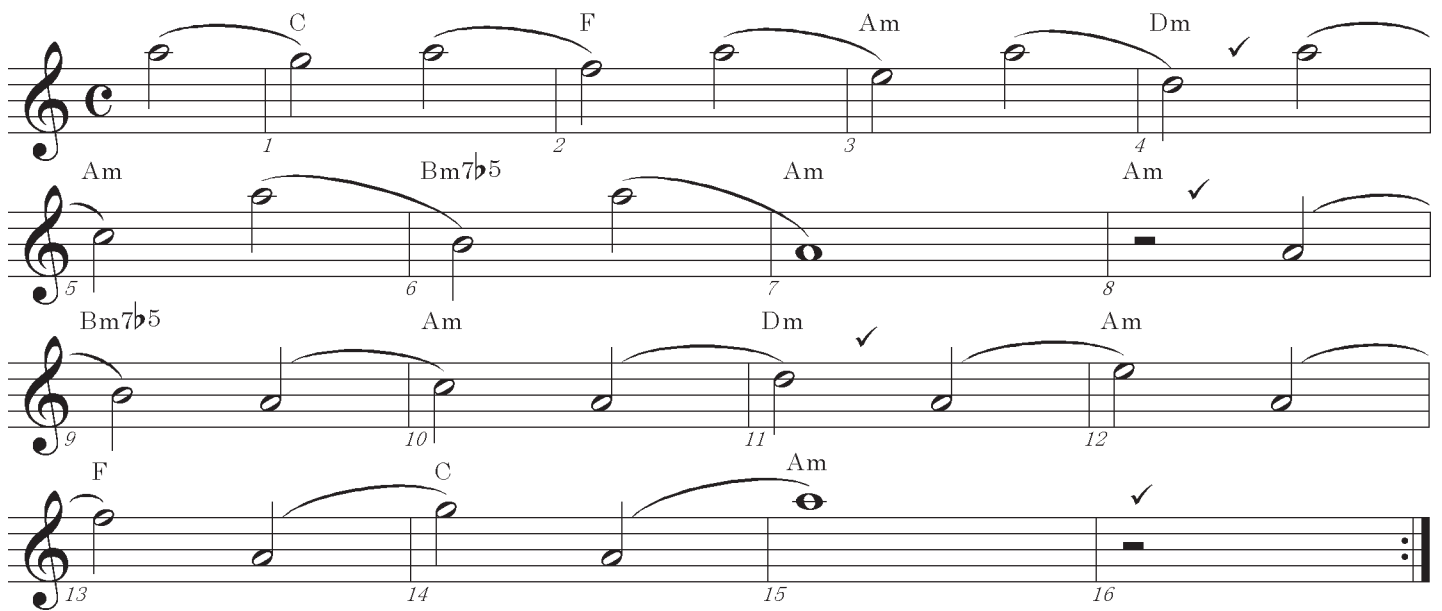


A in the Middle Register Exercise 3  *Track 26*

Caribbean Style

This exercise will *really* build up the strength in your lips.

6 beats introduction on the CD.



Rainy Sunday  *Track 27*

Acoustic Folk Style



God Rest Ye Merry Gentlemen



Track 28

Swing Style

3 Counts Introduction.

Musical score for "God Rest Ye Merry Gentlemen" in 4/4 time, Swing Style. The score consists of 20 measures across four staves. Chord progressions are indicated above the notes. Checkmarks (✓) are placed above certain notes. The score ends with a double bar line and repeat dots.

Chord progressions: Am, E, Am, F, Dm, E, Am, E, Am, Dm, E, Dm, G, C, F, G, Am, D7, G, C, C, Am, E, Am, D, G, C, C, Am, Em, Am.

All Through the Night



Track 29

St. Elmo Style

Above bar 8 in this song, is the instruction: *D.C. al Fine*. This means return to the beginning and play until the word Fine.

D.C. is an abbreviation of the Italian words "da capo," which mean "to the head."

Musical score for "All Through the Night" in common time (C), St. Elmo Style. The score is divided into two systems, each with two staves. Chord progressions are indicated above the notes. Checkmarks (✓) are placed above certain notes. The instruction "D.C. al Fine" is written above the final measure of each system. The word "Fine" is written above the final measure of each system, with "Fine 3rd time" written above the final measure of the first system.

Chord progressions: C, F, D7, G, F, G7, C, F, C, F, C, F, D7, G7.

Reville - Key of F  *Track 30*

March Style

3 Counts Introduction.

F throughout

Musical score for the introduction of 'Reville' in the key of F major, 3/4 time. It consists of three staves of music. The first staff starts with a treble clef and a common time signature, which changes to 3/4. The melody begins with a quarter rest, followed by a quarter note G4, a quarter note A4, and a quarter note Bb4. The second staff continues with a quarter note C5, a quarter note Bb4, and a quarter note A4. The third staff concludes with a quarter note G4, a quarter note F4, and a quarter note E4. The piece ends with a double bar line and repeat dots. The instruction 'F throughout' is written above the first staff.

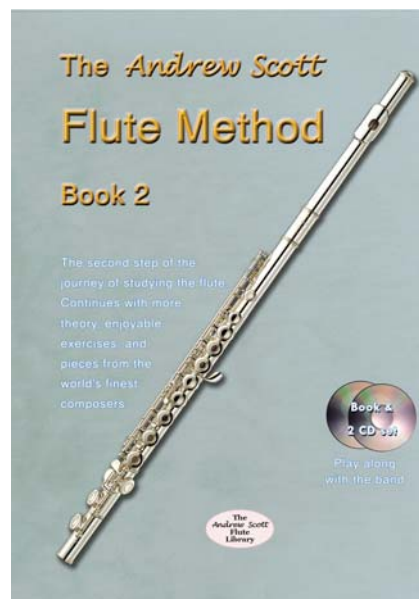
Morning Has Broken  *Track 31*

Mancini Waltz Style

Student *Teacher*

Musical score for 'Morning Has Broken' in the key of G major, 3/4 time. The score is presented in two parts: 'Student' and 'Teacher'. The 'Student' part is written in a single treble clef staff, and the 'Teacher' part is written in a grand staff (treble and bass clefs). The piece consists of 23 measures. The 'Student' part begins with a quarter note G4, a quarter note A4, and a quarter note B4. The 'Teacher' part begins with a quarter rest, followed by a quarter note G4, a quarter note A4, and a quarter note B4. The score includes various chords and melodic lines, with checkmarks indicating specific notes or phrases. The chords are: G, Am, D, C, G, G, Bm, Em, G, D, D, G, C, C, G, Em, A, D, G, C, D7, G.

Thank You
for trying out
The Andrew Scott
Flute Method Book 2



Like to Learn More?

If you would like to continue your journey of musical discovery with the flute, visit

andrewscottmusic.com